

Rembo

ATELIER

2026 Collection





ESENCIA

COLLECTION

The 2026 Collection, *Esencia*, reflects the refined soul of Rembo.

Inspired by the essence of the modern bride, discover light, flowing silhouettes crafted with conscious fabrics and intuitive design. Minimalist pieces meet intricate floral laces; bold sleeves and contemporary strapless shapes offer a fresh perspective on femininity. Delicate layers, from fluid capes to soft tops and jackets, invite every bride to personalise her look with ease and emotion.

Esencia honours authenticity, comfort, and self-expression, offering a collection that feels as true as the woman who wears it.



PÉTUNIA



PISTIL



PLUS QUE PARFAIT





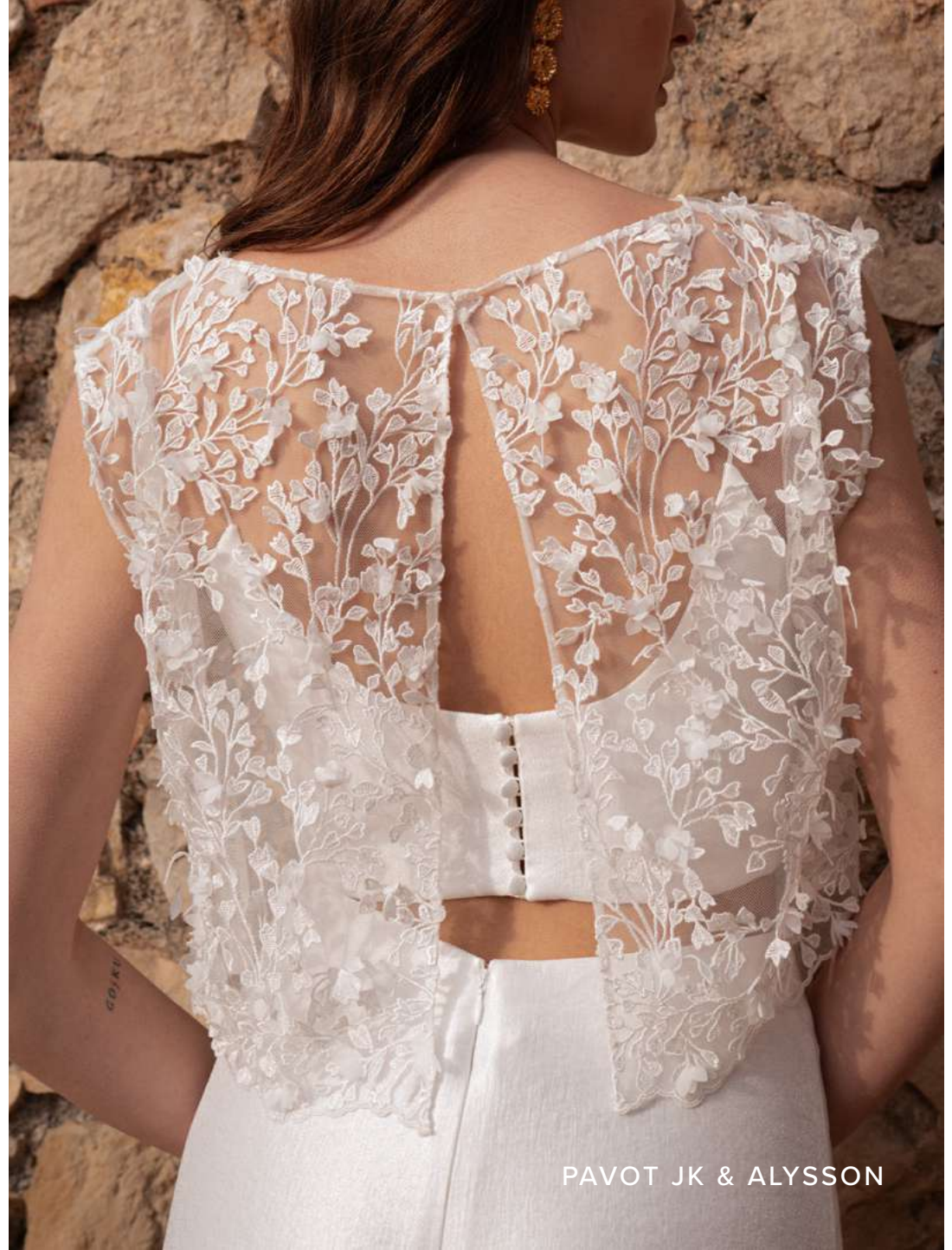
POETIC



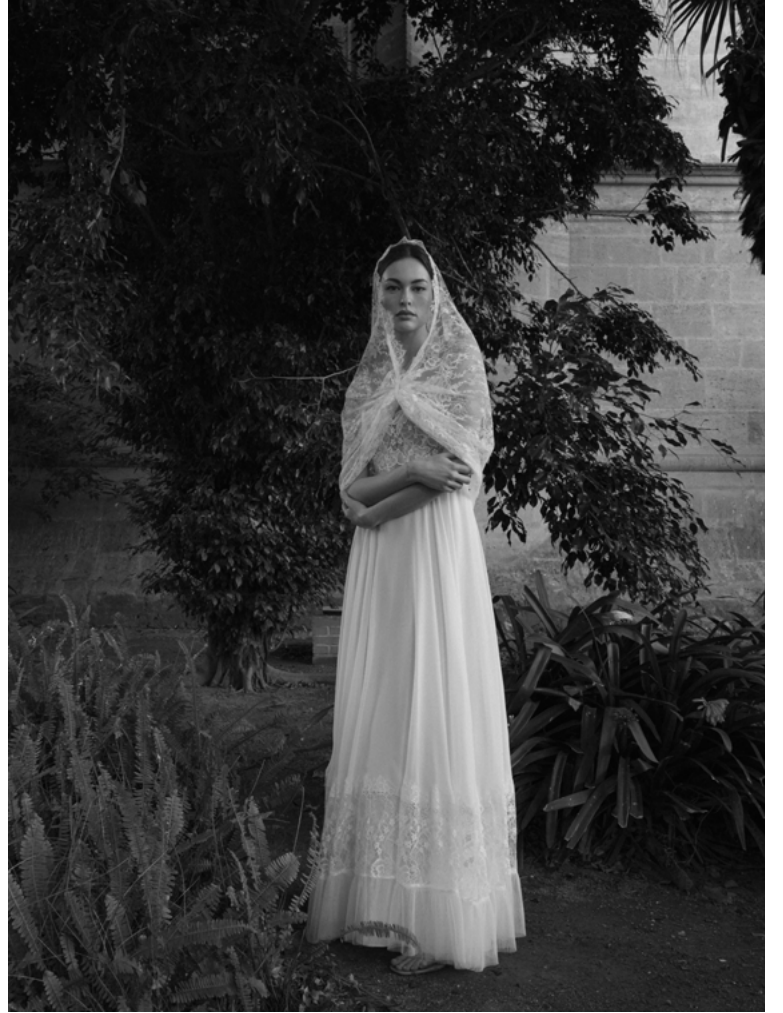
PHYSALIS



POUR TOI



PAVOT JK & ALYSSON



DAHLIA



TULIPE



PACIFIC



PROSPERE JK & PASSION



HORTENSIA



PROMESSE

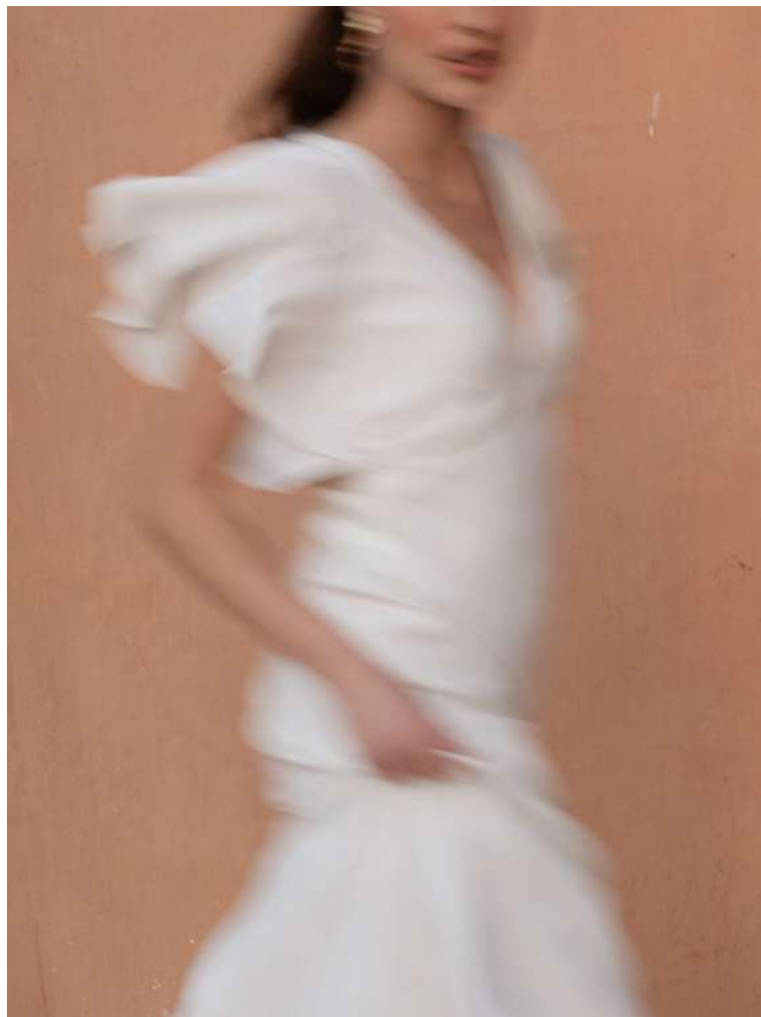


PLUME





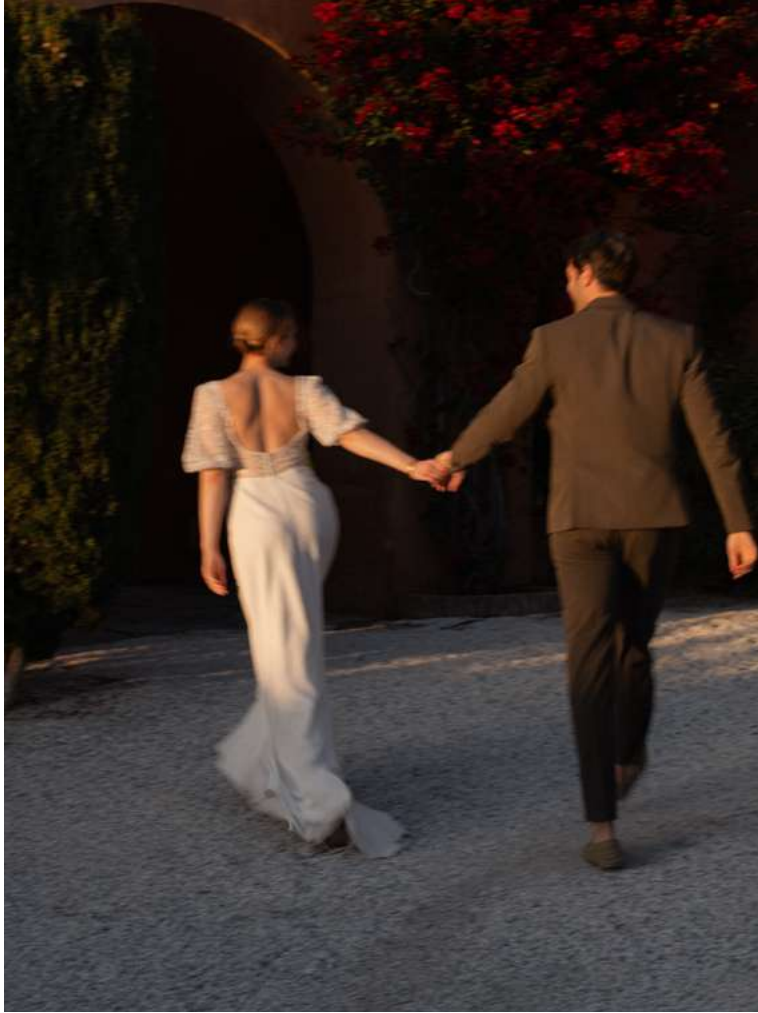
VIOLETTE



PIMENTA



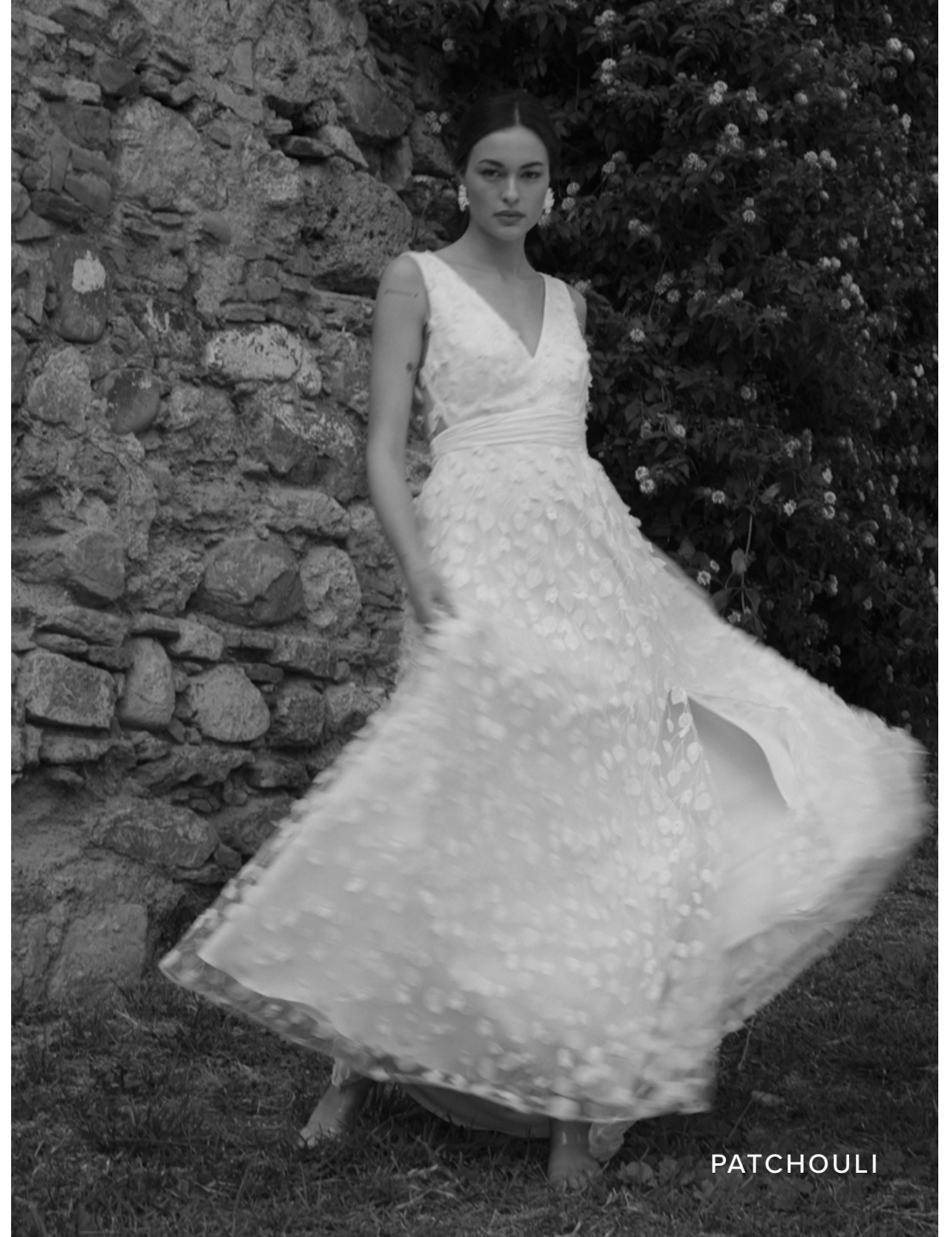
PODEROSA



PERFECT



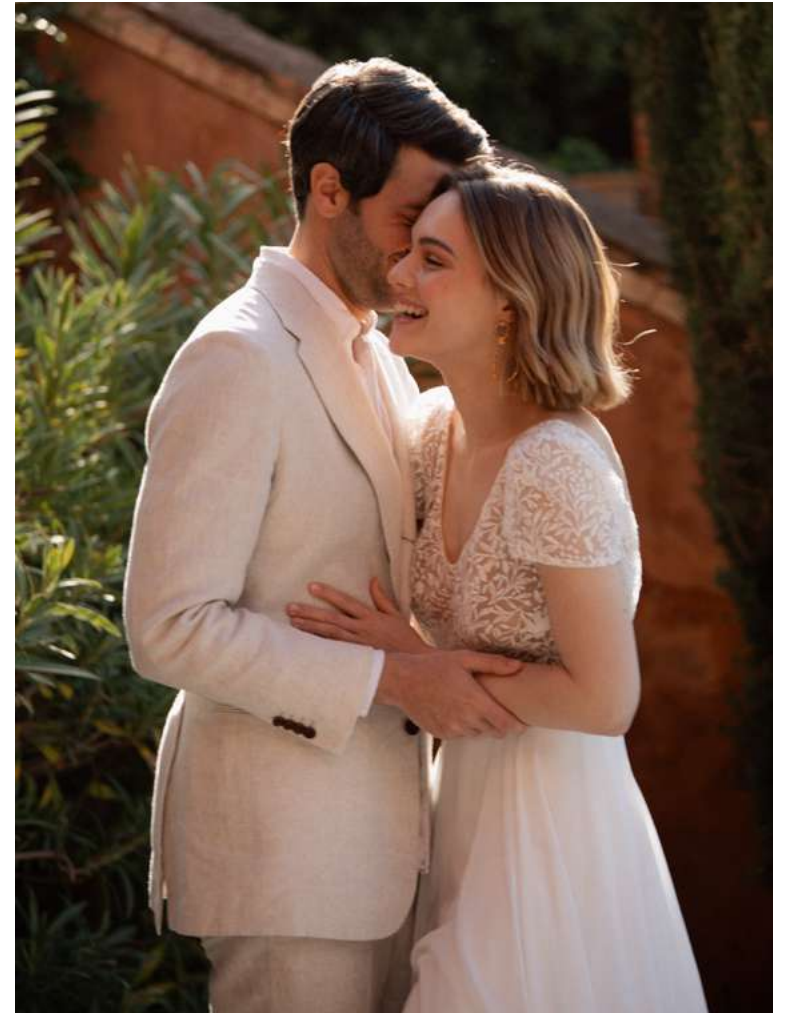
TOURNESOL



PATCHOULI



MYOSOTIS





Rembo

ATELIER

For the bride who dares to follow her own path, Rembo is an invitation to *ESCAPE THE ORDINARY* and celebrate love with authenticity, grace, and effortless beauty.